

Smart Meter training that gives you extra

Become a Smart Meter Installer

Your exciting and rewarding new career



ecta



ENERGY & UTILITY SKILLS | APPROVED PROVIDER

Why become a Smart Meter Installer?

What is Smart Metering and why would I want to train to be a Smart Meter Installer?

The government set a target of over 50 million smart gas and electric meters to be installed in over 27 million homes by 2020. It is universally agreed that this target is not achievable, and a new target has been set for 2024. Although the consultation is still ongoing (as of October 19) it is likely that annual targets for the installation of these meters will be extended to include smaller energy companies as well as the big six, in order to ensure that the new targets are met across the board. The idea is to create a "smart grid" allowing energy distribution to be monitored and tailored to demand, as well as ensuring that consumers have more knowledge and control over their own energy consumption, empowering them to reduce energy consumption

(and therefore cost) where they can. Now the installation of the second generation "SMETS2" meters has begun, this means that consumers will be able to change suppliers much more easily and quickly than has previously been possible. Although problems with these new meters has been well publicised, these issues are being addressed, and the roll out of the new meters has begun in earnest.

This smart grid will enable further innovations in the future, eventually leading to "smart homes" where everything from your heating to the charging of your electric vehicle can be managed remotely.

For Smart Meter installers, this means that 2024 will not be the end. As well as the obvious ongoing meter exchanges that will need to be done due to damage and new supplies, many companies are already looking at upskilling their existing workforce to be able to install these new technologies, such as electric vehicle charging points. There are also opportunities for progression within the sector, such as auditing, supervisory and management roles, as

well as upskilling to Multiphase electric meter and medium pressure gas meter installation.

The role of a Dual Fuel Smart Meter Installer

As a smart meter installer, you will be working in peoples's homes replacing their existing gas and electric meters with new smart meters. You will usually work in your home postcode area, and will receive your work on a company issued handheld device. You will usually be expected to complete between 3 – 6 exchanges per day. You will be expected to provide excellent customer service, as well as a competent and safe installation. You will get to meet many different people, and no two jobs are ever the same. You will be provided with a company vehicle, uniform, PPE and all the required tools and equipment to complete your role. Starting salaries range from £26k per annum to £28k per annum, but installers can expect to reach earnings of up to £40k per annum OTE if performance criteria (such as Health & Safety and installation targets) are met.



"My Smart Meter course was enjoyable due to the way it was delivered. Great trainer, bags of knowledge, and a top place to learn."

How does it work?

Learners will work towards a full Level 2 Diploma in Smart Metering (Dual Fuel), which on successful completion, will allow them to install both Gas & Electric Smart Meters.

We work with several Smart Meter installation companies who are looking to recruit all over the county. The course costs £6,200 + VAT, which you will be expected to fund yourself. Finance packages are available and are described in more detail on page 5.

Application

First, we will ask you to complete an application form. This gives us basic information about you which will allow to check for any potential barriers to your employment, for example, all Smart Meter Installers will be DBS checked and some previous convictions may mean you will be unsuitable for the role. We will also you confirm that you have a full UK driving licence and are eligible to work in the UK.

We also look at the area of the country you live in, and check this against the available roles. If you are in an area one of our partners is recruiting in, and have no apparent barriers to employment, we

will invite you to attend an Open Day at our Centre.

Open Day

During the day, you will get to look around our training facilities, meet the trainers and ask any questions you have. We will also ask you to complete basic maths and English assessments, as well as a colour vision test. You will also complete an aptitude test. You will be interviewed by the company who is recruiting in your area (this will also be the company providing the mentored work placement for your qualification).

If you successfully pass these initial assessments and interview, you will be offered a short term contract by the Smart meter company. This will cover the period from the start to the end of the mentored work placement, for which you will be paid (From week 7 of the training to week 13).

Enrolment

Only once you have passed the initial assessments and have an offer from an employer will we enrol you on to the course. At this point you will be invoiced for the £6,200 + VAT.

Start Training!

The qualification you will be doing is the Level 2 Diploma in Smart Metering (Dual Fuel). This consists of 6 weeks training in the centre, which is a mixture of power and gas theory and practical training in our purpose built workshops. You will learn how to safely disconnect and exchange a single phase power meter, and remove and exchange low pressure gas meters. You will learn how to safely test the existing and new installations, how to commission smart meters, the customer service skills required, and how to identify and deal with any technical unsafe situations you may come across. See page 7 for a full description of topics covered.

On site mentored work placement

As part of the qualification, you need to build a portfolio of work on site, under the supervision of a qualified engineer. You will be partnered with an engineer, and shadow them in their daily work, using the knowledge and skills you have gained in the centre to slowly progress to completing the full installation. At the end of the mentored work placement, you will be assessed on site to ensure

you are ready for final assessment. You will be paid for your time during the mentor placement, salaries differ between companies.

Final Assessments

Finally you return to ECTA for one week to complete the final assessment for the Level 2 Diploma in Smart Metering (Dual Fuel) and the CMA3 & MET1 (Gas) qualifications.

Once you have successfully completed the final assessments and mentor work placement, the employer will discuss with you a permanent contract.

“Just finished my training on installing electronic smart meters, very impressed with the training centre.”

Zac Cawdron

Level 2 Diploma in Smart Metering (Dual Fuel)

The schedule of the Smart Metering (Dual Fuel) qualification is detailed here.

This is a full time programme of study, and involves classroom based training, practical workshop training, home study and a mentored work placement which will be organised by our specialist partnered companies.

The course is assessed by means of written question papers, practical assessments and a portfolio of work carried out during the mentored work placement. Summative assessments for the Level 2 Diploma and ACS Domestic Gas Metering are to be completed in the final week of the programme.

This course is designed for New Entrants to the Industry.

Week 1

This week focuses on Health & Safety, Risk assessment, basic electrical theory, Customer service and Smart Communications. You will learn how to complete basic tasks involved in electric smart meter installation and the theory and practical skills required.

Week 2

This week is more practical training. You will get to exchange loads of electric meters in the centre, find faults and learn how to report and/or rectify.

Week 3

This week focuses on the basics of Gas work, including regulations, combustion and tightness testing in a mixture of theory and hands on training.

Week 4

This week focuses on purge volumes, combustion, gas rating and pipework.

Week 5

This week focuses on chimneys, flueing, ventilation, unsafe situations and practical pipework skills.

Week 6

Practical dual fuel meter installations, ensuring your knowledge is embedded and giving you plenty of opportunity to practice before you go out on site.

Week 7 - 12

Mentored Work placement - length dependent on progress. Initial training on meter installations with mentor, as you gain confidence, you will undertake more and more if the installation. Once you are ready, you will start to collect evidence for portfolio (14 jobs required). Final assessment on site will be carried out by an Independent Assessor usually a supervisor or manager from the company - but not the mentor).

Final Assessment Week

Return to ECTA for final assessments for Level 2 Diploma in Smart Metering (Dual Fuel). Undertake ACS Domestic Gas Metering Assessments.

"The course was challenging, but very enjoyable. The atmosphere was supportive and friendly."

John Coulter

Invest in your future!

£40k

When you gain more experience you can expect to achieve an OTE of up to **£40k** per annum.

£6.2k

You will be expected to fund the course yourself, £6,200 + VAT, that's £7,440 all together.

£26-28k

When you start you can expect a starting salary of between £26 - £28k per annum.

£28-30k

After successfully completing your probationary period, your salary will rise to between £28 - £30k (not including bonuses).

£££

Salaries and packages differ between employers, with some offering a higher salary and some offering competitive bonus schemes. There are also opportunities to progress into higher paid management positions.

£155.70

Finance packages are available, monthly repayments start from £155.70p. Finance is provided by our lender, Duologi*.

* Finance is provided by our lender, Duologi. Duologi is a trading name of Specialist Lending Ltd which is a limited company registered in the UK under number 10664999 at the registered address 10 Bressenden Place, London, SW1E 5DH, United Kingdom. Authorised and regulated by the Financial Conduct Authority under number 774712.

Finance options...

	Option 1	Option 2	Option 3
Deposit	£2976	£744	£744
Total amount of credit	£4464	£6696	£6696
Duration	12 months	36 months	60 months
Representative APR	0%	14.9%	14.9%
Monthly payments	£405.82	£228.76	£155.70



"Finance is provided by our lender, Duologi. Duologi is a trading name of Specialist Lending Ltd which is a limited company registered in the UK under number 10664999 at the registered address 10 Bressenden Place, London, SW1E 5DH, United Kingdom. Authorised and regulated by the Financial Conduct Authority under number 774712."

The next steps...

1. Complete Application form and send back to ECTA

2. We will check which employers are recruiting in your postcode area and that there are no barriers to entry

3. We will invite you to attend an Open Day, which will include initial assessments and an interview with the potential employer

4. Employer accepts you for mentored work placement, and will provide short term contract of employment

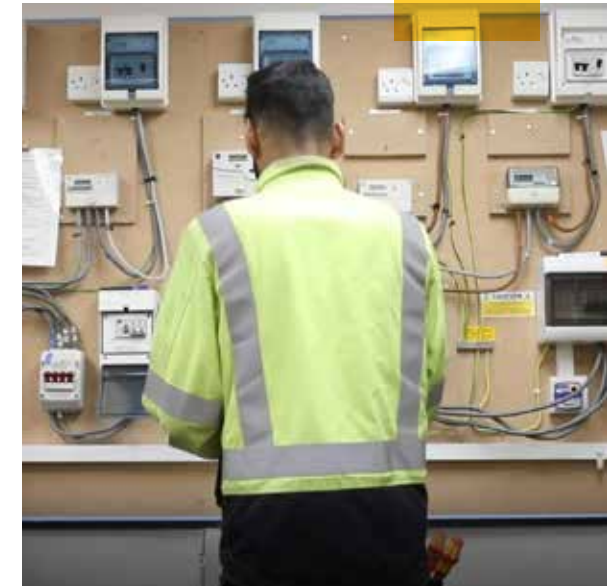
5. You start the course - 6 weeks in centre training at ECTA

6. From week 7 you will be working in the field under the supervision of a qualified Smart Meter engineer to complete your portfolio . You will be paid for this period

7. On week 13, you will return to ECTA for your final assessments

8. Successful completion of assessments

9. Start your new career



Case studies...

I worked in a fabrication factory for nearly 30 years, and always felt I could do more. It was a reasonably skilled job, but offered no opportunity for progression, and the salary was not fantastic. My son did a Smart Metering course with ECTA, and couldn't be more enthusiastic about the course, and the job once he had passed the training. This gave me the push I needed to change my life.

Being a Smart Meter installer is the best move I have ever made. The guys at ECTA were so helpful and supportive during the training period, and although it wasn't easy, the benefits are worth the hard work. I am now earning more than I ever dreamt I could, and the company I work for are brilliant. I love the variety of the role, and meeting the different customers – every day is different. I really would encourage people to take the plunge – it is scary making such a massive step, but completely worth it.



Mike N

I worked as a joiner for many years, both in the UK and in New Zealand. Although I loved the work, when my girlfriend became pregnant, we made the decision to move back to the UK to be near to friends and family. I was looking for a long term career – not the more casual work found in the building industry. When I saw the opportunity to become a Smart Meter Installer, I was really interested. It was a big decision to spend the money on training, and I was worried what would happen if I failed. But ECTA made sure I understood exactly what I was getting into, and I sat the initial assessments and interview, so that ECTA, the employer and I were all happy that I had the ability to complete the qualification, and I received a provisional job offer from the employer before I started the training. I am getting paid whilst I am on the mentor work placement, which really helps now that my daughter is here! I have a couple of weeks left before my final assessments, and I am enjoying the work so much. My confidence is improving every day, and I can't wait to start work properly!



Dan O

Why train with ECTA?

Founded in 2005, we have been training in the Gas, Electrics, Renewables and Water industries for over 10 years.

Industry expertise

We have a proven track record of delivering quality training to companies both large and small throughout the UK. Our 16,000 sq ft training centre in Stockport is dedicated to offering the best resources and facilities possible, and our dedicated Smart Metering training rooms offer a wide range of scenarios to prepare you for the realities of working in real-life situations.

Our team have personal experience of working in the industries they teach, giving an extra dimension to our training programmes. We've been training the pros for years, and some of the biggest companies in the UK trust us to train their teams.

We are always adding extra courses, to cover new sectors and the latest innovations, which all means you'll be getting great quality training to set you up for a rewarding future.

Free parking is available in our car park. We are just 5 minutes from Junction 27 on the M60, and close to major rail links.

"I was really impressed with the depth of knowledge displayed by both the training and assessment teams. I highly recommend."

Peter Lamb



Get in touch

If you would like to find out more, please get in touch with a member of our team

Phone:

0161 480 5656

Email:

hello@ectatraining.co.uk

Website:

www.ectatraining.co.uk

Training centre:

Unit 10, Newby Road
Industrial Estate,
Newby Road
Stockport
SK7 5DA

ecta